



# EREMOPHILAS

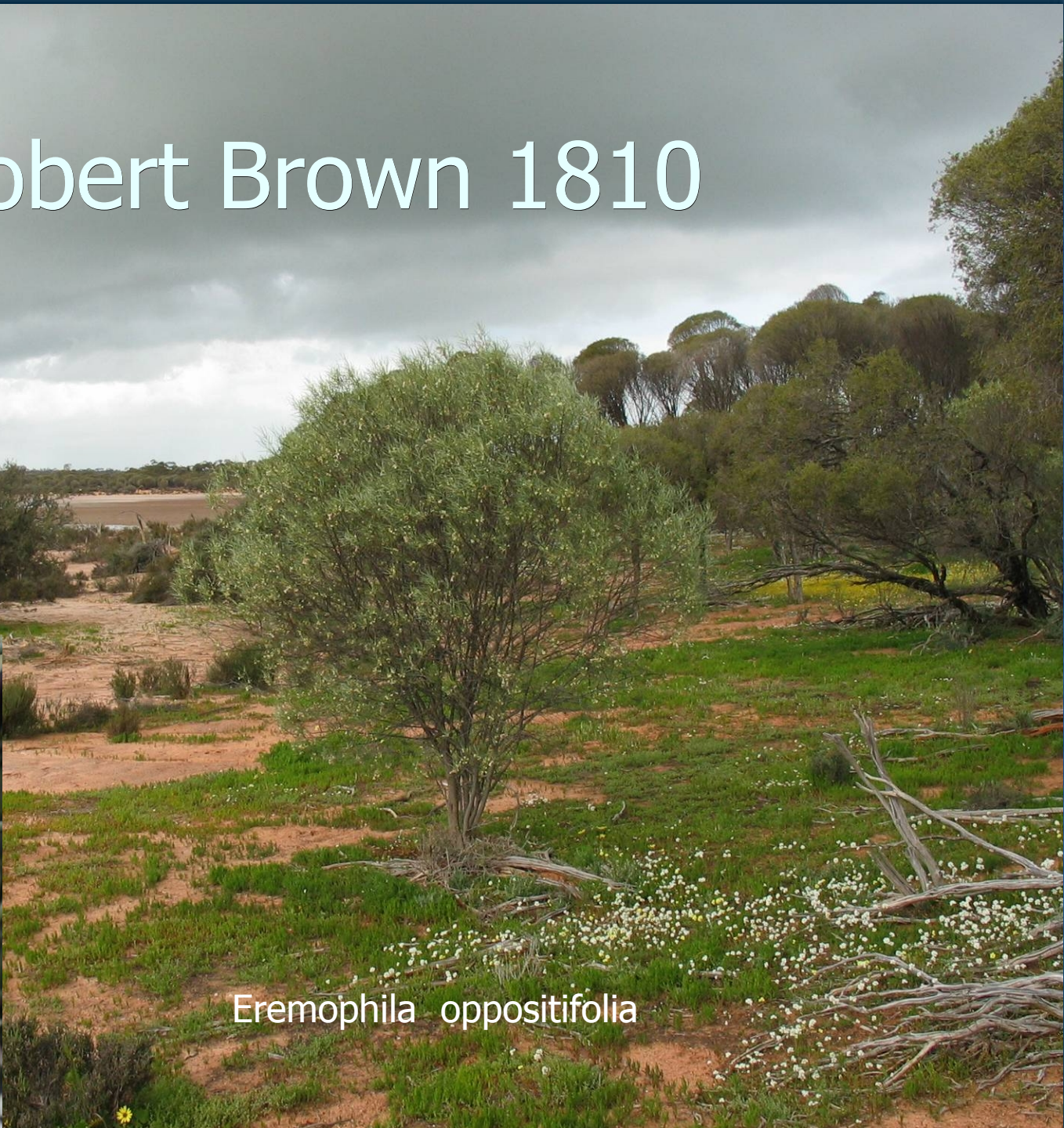
THE LOVERS OF  
LONELY PLACES

Bevan Buirchell





# Robert Brown 1810



*Eremophila oppositifolia*



# Evolution of a name

- Eremophila
- Pholidia
- Stenochilus
- Pholidiopsis
- Duttonia
- Sentis



# Ferdinand Van Mueller

## 1859



*E. exilifolia*



# Eremophila Taxonomy

- Named species and subspecies - 272
- Recently named species - 22
- Undescribed taxa ~ 60 phrase names
- BC's Buckets – Complexes
- Potential 400-450



# Phylogeny studies

- Rachael Fowler PhD  
Uni Melbourne
- Relationships within  
the Myoporaceae
- Relationships within  
Eremophila





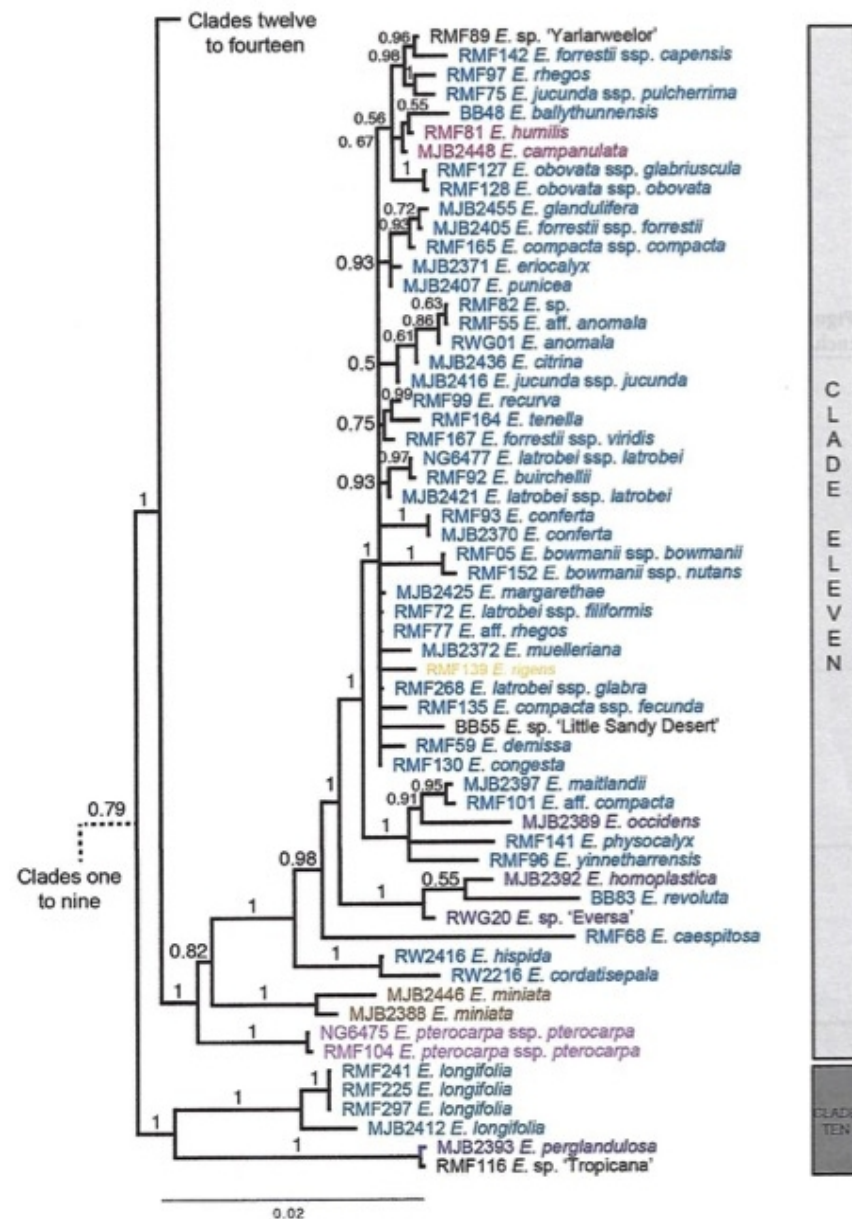
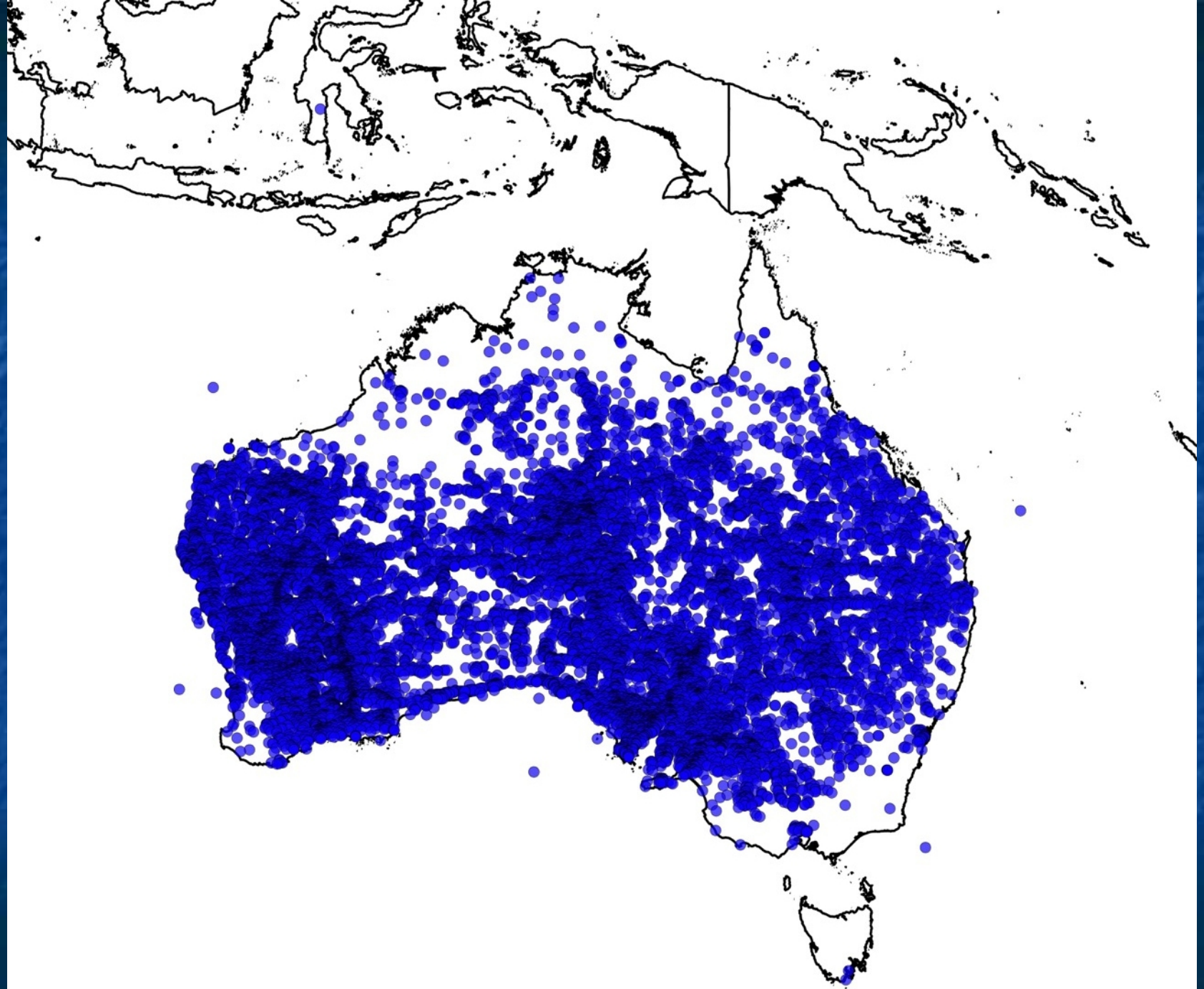


Figure 4.8 Clades ten and eleven of nrDNA Bayesian inference analysis. Posterior probabilities included for each branch, *Eremophila* species coloured according to sectional classification.

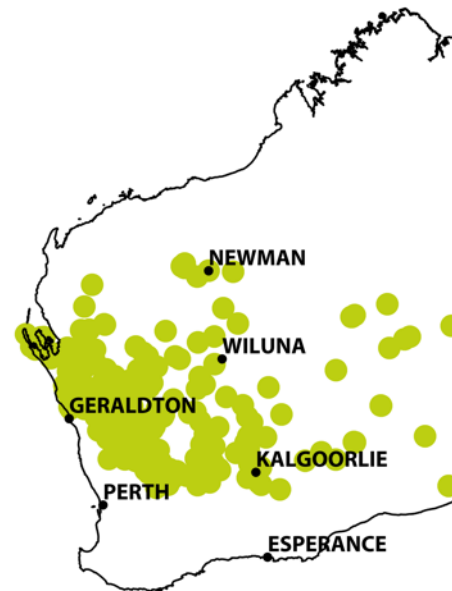
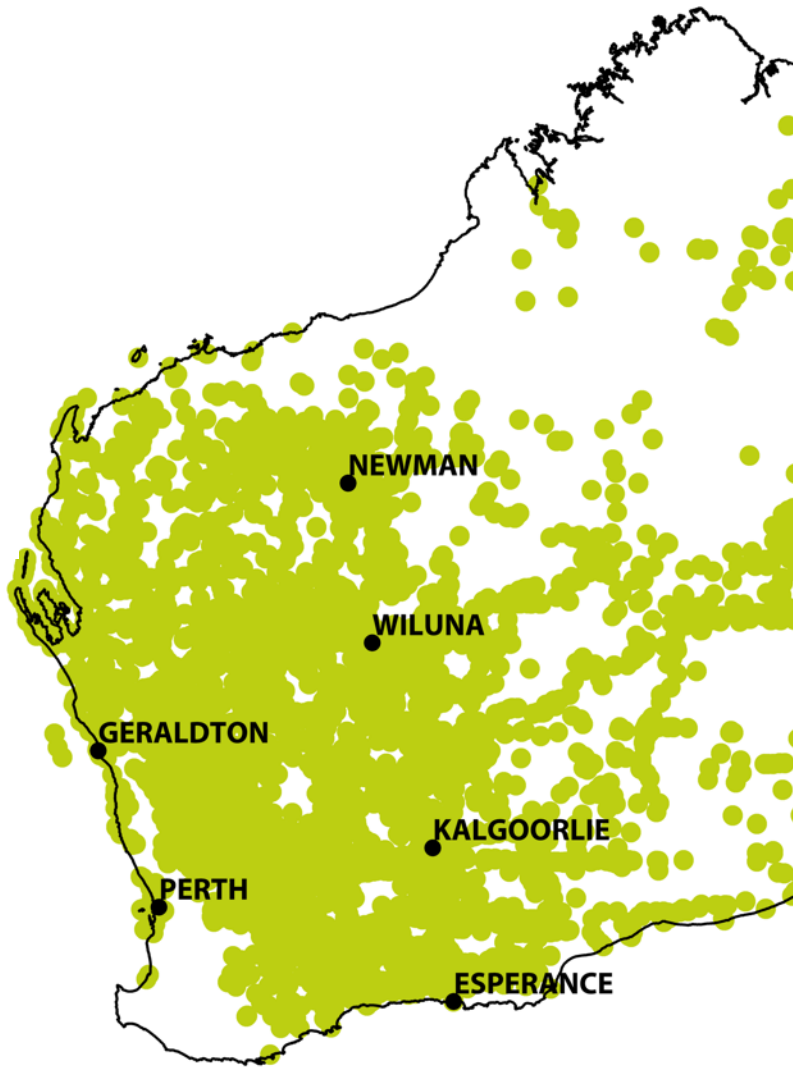














# Flower shapes







*E. decipiens*





*E. latrobei*





# Bell-shaped



*E. campanulata*



*E. humilis*



*E. fraseri* subsp. *fraseri*





E. platycalyx





*E. oppositifolia* subsp *angustifolia*



*E. rostrata* subsp ?







*E. conferta*





*E. interstans* subsp.  
*virgata*



*E. lactea*



*E. homoplastica*





*E. fasciata*



*E. rigida*



*E. caperata*



*E. canaliculata*

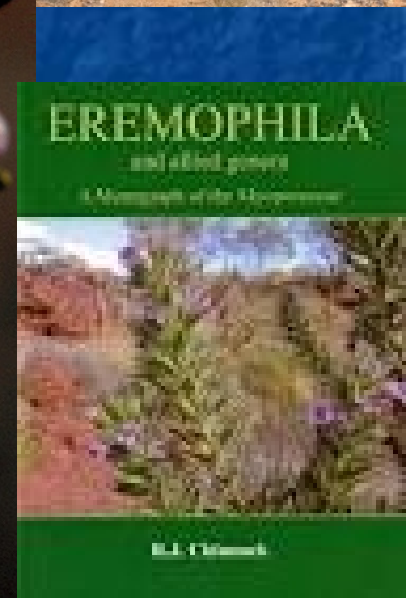
Bob Chinnock  
2007



*E. cryptothrix*



*E. caespitosa*



EREMOPHILA

and allied genera

A Monograph of the Myoporaceae

Bob Chinnock



# Eremophila grandiflora



*Eremophila densifolia* subsp. *erecta* and *E. grandiflora* (Myoporaceae), two new taxa from south-west Western Australia Nuytsia 17: 81-86 (2007) Brown and Buirchell



*Eremophila calcicola*



*Eremophila buirchellii*





## **Eremophila ballythunensis**



## **Eremophila yinnetharrensensis**



New species of *Eremophila* (Scrophulariaceae): thirteen geographically restricted species from Western Australia Nuytsia (2016) 27: 253-283





**Eremophila daddii**



# **Eremophila ferricola**







**E. pusilliflora**



**E. capricornica**





**E. regia**



**Eremopila resiliens**





# **Eremophila victoriae**





*E. sericea*



*E. xantholaema*



*E. oldfieldii* subsp. *papula*





# Undescribed Taxa







***E. glabra* sp. Wongan Hills**



# Nooloo Breakaway





# Eremophila sp. Landor





# Eremophila sp. Coodardy





Sp Doolguna



Sp Murgoo





## Wubin North

Sp Tropicana





sp. Thunderlarra



sp. Collier Range





sp. Mt Jackson



sp. Yarlarweelor







Hey That's  
interesting



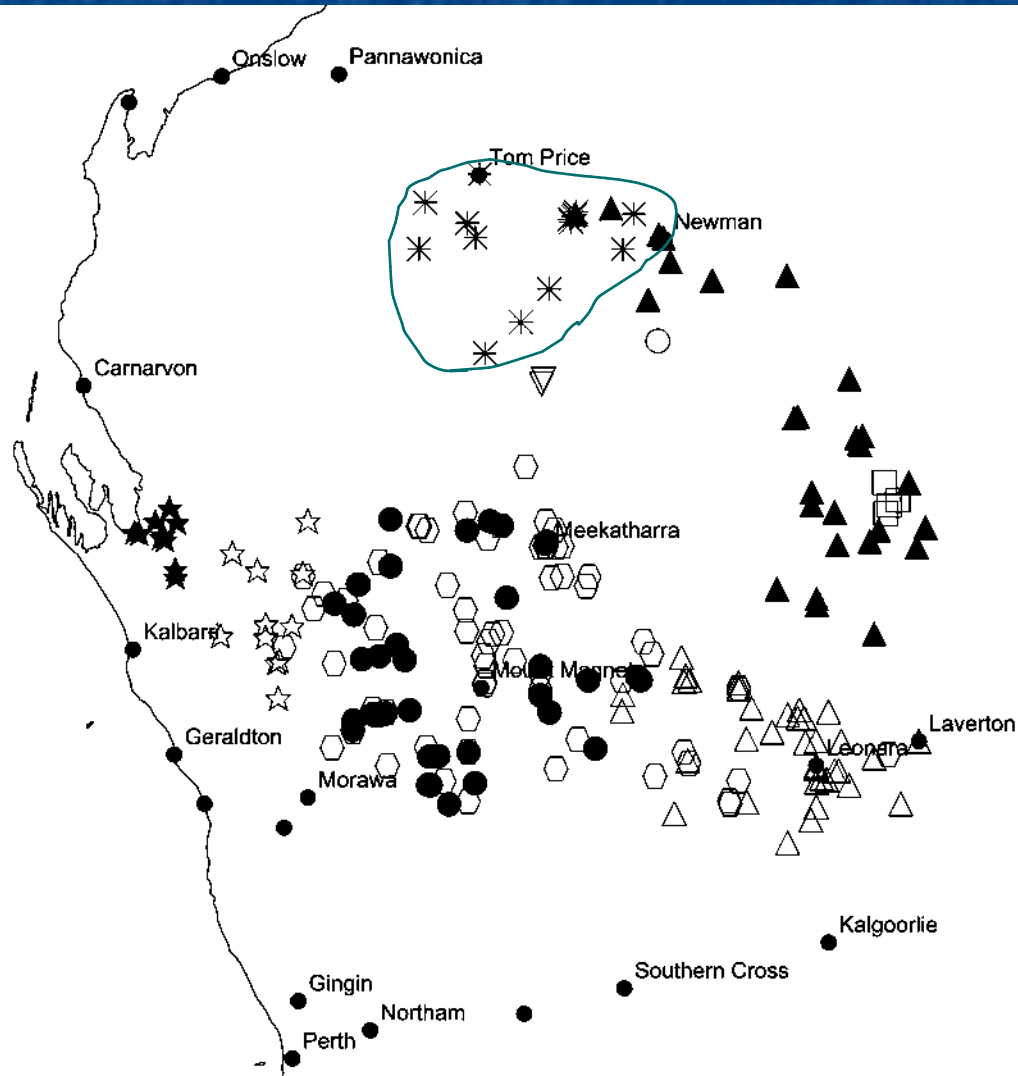


# BC's Buckets

- *E. forrestii* (4) 5 - 8
- *E. platycalyx* (2) 9 - 10
- *E. glabra* (9) 15 - 30
- *E. latrobei* (3) 10
- *E. clarkei* (1) 6 - 10
- *E. hughesii* (2) 3 - 5 *E. jamesiorum*
- *E. gilesii* (2) 3 - 6



# E. platycalyx complex - 2







*E. platycalyx* subsp. *platycalyx*

*E. platycalyx* subsp. *pardalota*



North west highway



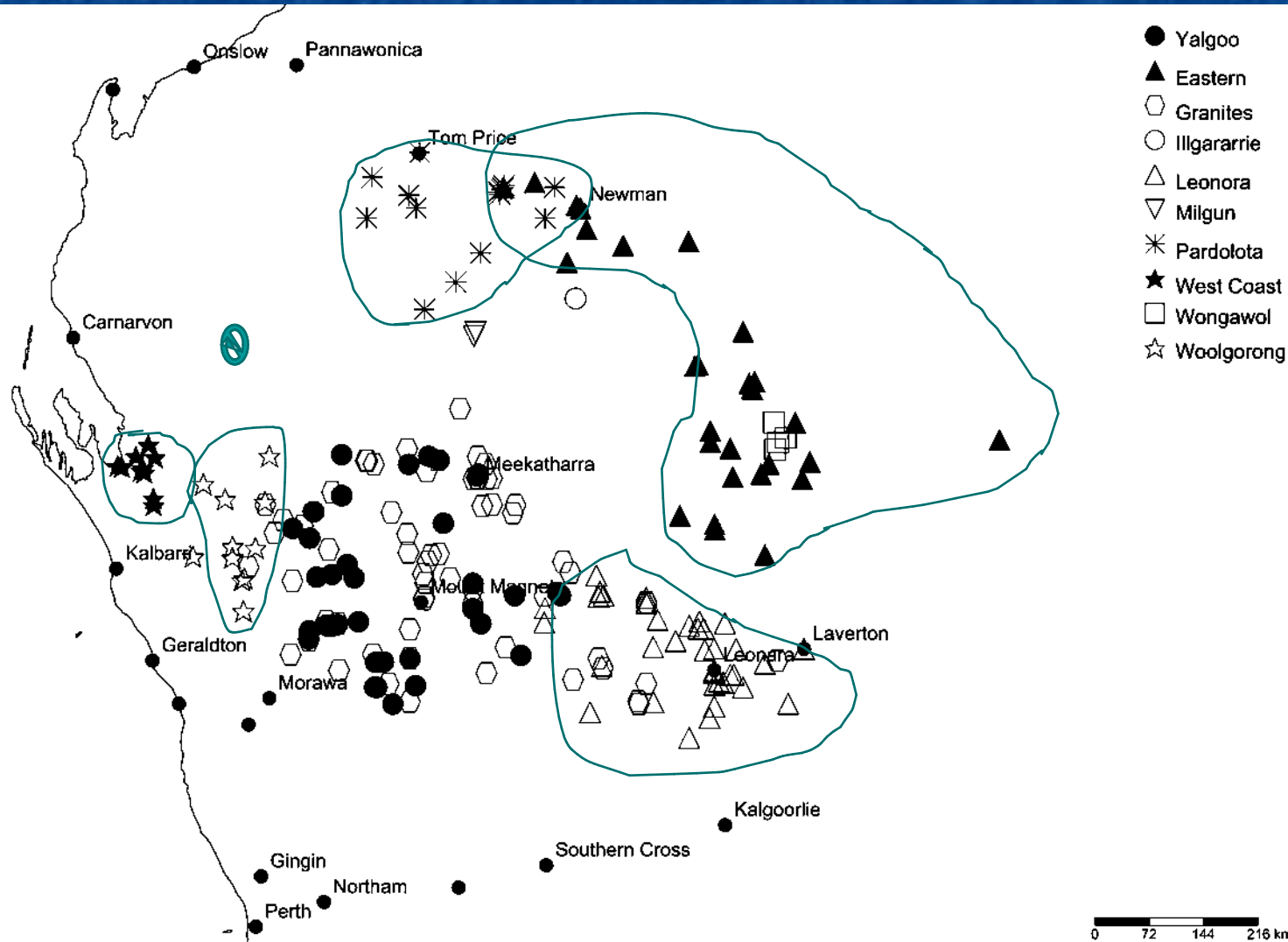


# Leaf differences in *E. platycalyx* subspecies





# E. platycalyx complex - 11





# Other Projects

- Insect coevolution – Shaun Cullerton at UniNSW
- Aboriginal medicine and bioprospecting





2 mm



2 mm



2 mm

## Miridae



2 mm



2 mm







*E. reticulata*



# Thank you

**Andrew Brown**

**Phil and Marlene James**

**Ron and Claire Dadd**

**Glenda Marshall**

