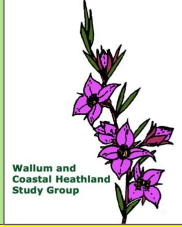


WALLUM

AND COASTAL HEATHLAND STUDY GROUP



SHORT NEWSLETTER No 55

JULY 2023



After June 2023 Fire - Banksia Trail, Bicentennial Bushwalks, Bribie Island

ISSN 1038-7889

Leader and Editor:

Allan Carr

PO Box 541

BRIBIE ISLAND Q 4507

Ph: 0424 322 242

carr.allan44@gmail.com

**There is now
no Membership Fee
payable.**

**All Newsletters are sent
by email so no costs are
incurred.**

From the Leader

Dear Members

If you look back at Newsletter 54 (March 2023) you will see that the Banksia Trail above looks very different now. I find it hard to believe that this kind of burning is good for Wallum Woodland.

It seems to me that the so called 'hazard reduction' burns in recent years have done much harm to these areas.

The fires of the third week of June this year covered a huge area of the southern portion of Bribie Island National Park, so it could be many years before the walking tracks there can be enjoyed for their wildflower displays once again.

Allan C.

Photos on this page and the next by Allan Carr

Our Excursion this month - July

This month our excursion will be to the Lagoon Creek Reserve. Details below: -

9.00 am Sunday, 16 July

- Meet at 9.00am Wallace Street North Park, Caboolture, (UBD Map 48:B17).
- Walk afterwards in Lagoon Creek Reserve from Toovey Street, (UBD Map 48:D14).
- Our BYO lunch will be at the car park there.

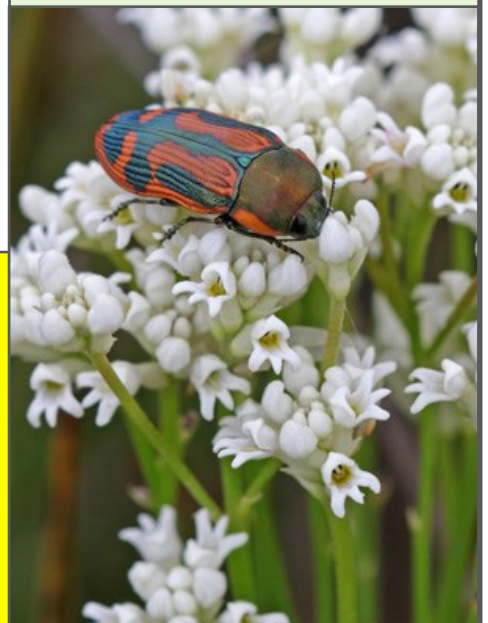
Allan C.

What's inside: page

Feature Plant

Boronia saffrolifera 2

This is a short newsletter as there have not been any contributions received from members.



Conospermum taxifolium, Bribie Island

Feature Plant

Boronia safrolifera

safrole boronia

Derivation: *Boronia*, after Francesco Borone, a young Italian assistant of English botanist, John Sibthorp, author of 'Flora Graeca' in the late 1700s. Borone died from a fall at the age of 25 and had no known connections with Australia. It was J E Smith who named the genus *Boronia* in 1798. *safrolifera*, a combination of *safrole* from sas(safr)as, and the Latin, *oleum* – oil, plus *fero* – to carry, (a reference to carrying the oil of sassafras).

Description: *B. safrolifera* is an erect shrub to 2 m with finely hairy branchlets in badly drained wallum wetland. It is found from Bribie Island in Qld, to Port Stephens in NSW. However, it is becoming rare on Bribie Island due to land clearing and burning regimes.

Leaves are opposite to 40 mm long and compound with 7 to 19 leaflets to 15 mm x 3 mm in opposite pairs except for the terminal one which is the shortest. They are paler underneath and strongly aromatic when crushed, having a sweet safrole smell similar to that of the sassafras plant.

Flowers to 10 mm across in clusters of 3 to 6 are deep pink, occasionally white and 4-petalled with 8 stamens. They can be present from August to November.

Fruits are flattened capsules to 4 mm long; seed-bearing lobes explode in warm weather spreading the small black seeds widely.

Allan C.

